

*petlas*<sup>®</sup>

# AGRICULTURAL TIRES



*petlas*<sup>®</sup>



Petlas Agricultural Tires are characterized by quality workmanship, service, leading edge technology, unique tread designs and excellent durability offering perfect mix of quality and value.

Our success depends on exceeding the expectations of our customers and standing behind everything we do.

Petlas is a premium quality global tire brand that original equipment manufacturers and operators can count on for durable tires and quality service.

Our aim is to build long term relationships with our customers by providing excellent service, quality and delivering our promises.

#### DESCRIPTION

- \* For load capacity on various speeds, and inflation figures, please consult your sales representative.
- \*\* Load capacity on standard speed and weight.

- Our company is entitled to make any change on any information in this catalogue, without further notice.
- This catalogue annuls all the previous catalogues.
- All figures are for reference; our company is not responsible for printing errors.

## > RANGE OF PETLAS AGRICULTURAL TIRES

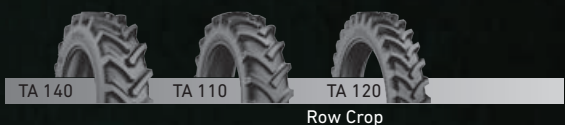
### ● TRACTOR FRONT



### ● TRACTOR REAR



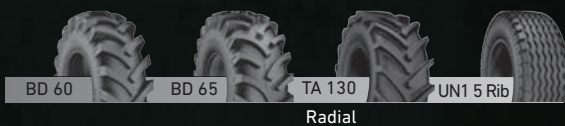
### ● TRACTOR RADIAL - ROW CROP



### ● TRAILER



### ● HARVESTER



### ● FORESTRY - FLOTATION



TRACTOR FRONT

**TP 8** Ideal tractor front tire

**Long Service Life / Durability**

Strong nylon carcass structure provides optimum durability

Improved tread compound provides high resistance against wear and cuts

Strong center and shoulder design provides high resistance to side impacts and tread base fatigue

**Ease Of Use**

Special tread geometry provides easy steering

Flexible carcass structure prevents sinking



Ideal tractor front tire for field and short distance road usage



ALL SIZES

6.00-16	6PR	TT	88/A6
7.50-16	6PR	TT	98/A6
7.50-16	8PR	TT	103/A6
6.00-19	6PR	TT	93/A6



## TRACTOR FRONT

### **TD 16** General purpose tractor front tire

#### **Long Service Life / Durability**

Strong nylon carcass structure provides optimum durability

Improved tread compound provides high resistance against wear and cuts

Strong center and shoulder design provides high resistance against side impacts and tread base fatigue

#### **Ease Of Use**

Special tread geometry provides easy steering

Flexible carcass structure prevents sinking

#### **Self Cleaning**

Special tread design provides efficient self cleaning



Ideal tractor front tire with special tread design for field and short distance road usage



ALL SIZES

5.50-16	6PR	TT	86/A6
6.00-16	6PR	TT	88/A6
6.50-16	6PR	TT	91/A6
6.50-16	8PR	TT	97/A6
7.50-16	6PR	TT	98/A6
7.50-16	8PR	TT	103/A6
6.00-19	6PR	TT	93/A6
6.50-20	8PR	TT	108/A6
6.50-20	10PR	TT	115/A6
7.50-20	8PR	TT	108/A6
7.50-20	10PR	TT	115/A6



TRACTOR FRONT

**TD 17** Farm front tire with strong carcass structure

**Long Service Life / Durability**

Strong nylon carcass structure provides optimum durability

Improved tread compound provides high resistance against wear and cuts

Strong center and shoulder design provides high resistance against side impacts and tread base fatigue

**Ease Of Use**

Special tread geometry provides easy steering

Flexible carcass structure prevents sinking

**Self Cleaning**

Special tread design provides efficient self cleaning



Farm front tire with strong carcass structure



ALL SIZES

6.00-16	6PR	TT	88/A6
7.50-16	8PR	TT	103/A6
9.00-16	8PR	TT	111/A6
11.00-16	8PR	TT	118/A6





TRACTOR FRONT

**TD 18** Ideal tractor front tire for field and short distance road usage

**Long Service Life / Durability**

Strong nylon carcass structure provides optimum durability

Improved tread compound provides high resistance against wear and cuts

Strong center and shoulder design provides high resistance to side impacts and tread base fatigue

**Ease Of Use**

Special tread geometry provides easy steering

Flexible carcass structure prevents sinking



Ideal tractor front tire for field and short distance road usage



ALL SIZES

6.50-16	6PR	TT	91/A6
6.50-16	8PR	TT	97/A6
7.50-18	8PR	TT	106/A6
7.50-20	8PR	TT	108/A6



**petlas**<sup>®</sup>

TRACTOR FRONT

**TD 25** Ideal tractor front tire with special tread design for field and short distance road usage

**Long Service Life / Durability**

Strong nylon carcass structure provides optimum durability  
Improved tread compound provides high resistance against wear and cuts

Strong center and shoulder design provides high resistance to side impacts and tread base fatigue

**Ease Of Use**

Special tread geometry provides easy steering  
Flexible carcass structure prevents sinking

**Self Cleaning**

Special tread design provides efficient self cleaning



Ideal tractor front tire with special tread design for field and short distance road usage



ALL SIZES

6.00-16	6PR	TT	88/A6
6.00-16	10PR	TT	98/A6
6.50-16	6PR	TT	91/A6
6.50-16	8PR	TT	97/A6
7.50-16	8PR	TT	103/A6





TRACTOR FRONT

**TD 35** Farm front tire with strong carcass structure

**Long Service Life / Durability**

Strong nylon carcass structure provides optimum durability

Improved tread compound provides high resistance against wear and cuts

Strong center and shoulder design provides high resistance to side impacts and tread base fatigue

**Ease Of Use**

Special tread geometry provides easy steering

Flexible carcass structure prevents sinking

**Self Cleaning**

Special tread design provides efficient self cleaning



Farm front tire with strong carcass structure



10.00-16

8PR

TT

114/A6

ALL SIZES



**TA 60** High traction R1 farm front tire for standard field operations

**Long Service Life / Durability**

Strong nylon carcass structure provides optimum durability

Special tread compound provides high resistance against wear and cuts

Tread profile provides high resistance to tread base fatigue

**High Traction / Self Cleaning**

Wide and strong body provides easy grip and high traction

Special tread geometry provides efficient self-cleaning



High traction R1 farm front tire for standard field operations



ALL SIZES

5.00-10	4PR	TT	70/58A6
5.00-12	4PR	TT	62/A6
6.5/80-12	6PR	TT	80/A6
7.00-12	6PR	TT	83/A6
10.0/80-12	6PR	TT	98/A6
10.0/80-12	6PR	TL	98/A6
5.00-15	6PR	TT	88/A6
10.0/75-15.3	12PR	TT	114/A6
11.5/80-15.3	12PR	TT	123/A6
11.5/80-15.3	12PR	TL	123/A6
6.00-16	6PR	TT	88/A6
6.50-16	6PR	TT	91/A6
7.50-16	8PR	TT	103/A6
7.00-18	8PR	TT	106/A6
7.50-18	8PR	TT	106/A6
7.50-20	8PR	TT	108/A6
8.00-20	8PR	TT	113/A6
9.50-20	8PR	TT	107/A6



TRACTOR FRONT

**TA 50** High traction R1 farm front tire for orchard tractors

**Long Service Life / Durability**

Strong nylon carcass structure provides optimum durability

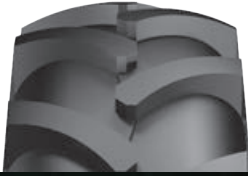
Special tread compound provides high resistance against wear and cuts

Tread profile provides high resistance to tread base fatigue

**High Traction / Self Cleaning**

Wide and strong body provides easy grip and high traction

Special tread geometry provides efficient self-cleaning



High traction R1 farm front tire for orchard tractors



ALL SIZES

6.5/80-12	6PR	TT	80/A6
6.5/80-12	6PR	TL	80/A6
6.5/80-13	6PR	TT	82/A6



**TA 60** High traction R1 farm rear tire for standard field operations

**Long Service Life / Durability**

Strong nylon carcass structure provides optimum durability

Special tread compound provides high resistance against wear and cuts

Tread profile provides high resistance to tread base fatigue

**High Traction / Self Cleaning**

Wide and strong body provides easy grip and high traction

Special tread geometry provides efficient self-cleaning



High traction R1 farm rear tire for standard field operations



ALL SIZES

8.3-24	8PR TT A6/108	13.6/12-28	8PR TT A6/125	16.9/14-34	12PR TT A6/145
9.5-24	8PR TT A6/112	14.9/13-28	6PR TT A6/125	16.9/14-34	14PR TT A6/148
11.2-24	8PR TT A6/116	14.9/13-28	8PR TT A6/130	18.4/15-34	8PR TT A6/141
12.4/11-24	6PR TT A6/115	16.9/14-28	8PR TT A6/135	18.4/15-34	10PR TT A6/146
12.4/11-24	8PR TT A6/120	16.9/14-28	10PR TT A6/139	18.4/15-34	12PR TT A6/151
12.4/11-24	12PR TT A6/128	14.9/13-30	8PR TT A6/131	18.4/15-34	14PR TT A6/156
13.6/12-24	8PR TT A6/123	14.9/13-30	10PR TT A6/135	12.4/11-36	8PR TT A6/126
14.9/13-24	4PR TL A6/112	16.9/14-30	6PR TT A6/130	13.6/12-36	6PR TT A6/125
14.9/13-24	4PR TT A6/112	16.9/14-30	8PR TT A6/137	13.6/12-36	8PR TT A6/129
14.9/13-24	6PR TT A6/123	16.9/14-30	10PR TT A6/139	13.6/12-38	8PR TT A6/131
14.9/13-24	8PR TT A6/128	16.9/14-30	12PR TT A6/143	14.00-38	8PR TT A6/131
14.9/13-24	10PR TT A6/134	16.9/14-30	14PR TT A6/144	14.00-38	10PR TT A6/136
14.9/13-24	14PR TT A6/142	18.4/15-30	6PR TT A6/134	15.5-38	8PR TT A6/133
18.4/15-26	12PR TT A6/146	18.4/15-30	8PR TT A6/139	15.5-38	10PR TT A6/138
18.4/15-26	12PR TL A6/146	18.4/15-30	10PR TT A6/145	15.5-38	12PR TT A6/142
18.4/15-26	14PR TT A6/149	18.4/15-30	12PR TT A6/149	16.9/14-38	8PR TT A6/141
11.2-28	8PR TT A6/118	18.4/15-30	14PR TT A6/151	16.9/14-38	10PR TT A6/144
12.4/11-28	6PR TT A6/117	12.4/11-32	8PR TT A6/124	16.9/14-38	12PR TT A6/142
12.4/11-28	8PR TT A6/122	16.9/14-34	8PR TT A6/139	18.4-38	8PR TT A6/143
13.6/12-28	6PR TT A6/121	16.9/14-34	10PR TT A6/142	18.4-38	10PR TT A6/147



TRACTOR REAR

**TZ 13** High traction R1 farm rear tire for standard field operations and for applications on sloping terrains

**Long Service Life / Durability**

Strong nylon carcass structure provides optimum durability

Special tread compound provides high resistance against wear and cuts

Tread profile provides high resistance to tread base fatigue

**High Traction / Self Cleaning**

Wide and strong body provides easy grip and high traction

Special tread geometry provides efficient self-cleaning



High traction R1 farm rear tire for standard field operations and for applications on sloping terrains



ALL SIZES

12.4/11-28	6PR	TT	A6/117
12.4/11-28	8PR	TT	A6/122
16.9/14-30	8PR	TT	A6/137
16.9/14-30	10PR	TT	A6/139
16.9/14-30	12PR	TT	A6/144





## TRACTOR REAR

### **TA 300** R1 farm rear tire

#### **Long Service Life / Durability**

Strong nylon carcass structure provides optimum durability

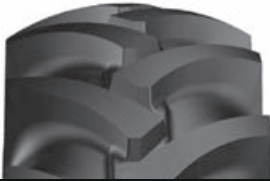
Tread compound specially developed for stony/tough terrains provides high resistance against wear and cuts

Tread profile with extra wide tread base provides perfect resistance to tread base fatigue

#### **High Traction / Self Cleaning**

Wide and reinforced body provides easy grip, high traction and reduced slipping

Special tread design for tough terrains provides superior performance



R1 farm rear tire with high resistance/traction and deep tread design for tough operating conditions



ALL SIZES

9.5-24	8PR	TT	A6/112
11.2-24	8PR	TT	A6/116
12.4/11-24	8PR	TT	A6/120
12.4/11-24	10PR	TT	A6/124
13.6/12-24	8PR	TT	A6/123
14.9/13-24	8PR	TT	A6/128
12.4/11-28	8PR	TT	A6/122
13.6/12-28	8PR	TT	A6/125
14.9/13-28	8PR	TT	A6/130
14.9/13-30	8PR	TT	A6/131
16.9/14-30	8PR	TT	A6/137
16.9/14-30	10PR	TT	A6/139
18.4/15-30	8PR	TT	A6/139
18.4/15-30	10PR	TT	A6/145
18.4/15-30	12PR	TT	A6/149
16.9/14-34	8PR	TT	A6/139
18.4/15-34	8PR	TT	A6/141
12.4/11-36	8PR	TT	A6/126
13.6/12-36	8PR	TT	A6/129
16.9/14-38	8PR	TT	A6/141





TRACTOR RADIAL

**TA 140** General purpose R1 farm rear tire with standard profile

**Long Service Life / Durability**

Strong carcass and impact ply

Special tread compound provides high resistance against wear and cuts

Tread profile provides high resistance against tread base fatigue, the tire maintains its traction performance even at its half-life

**High Traction / Self Cleaning**

Special tread geometry provides self cleaning

Strong and flexible sidewall

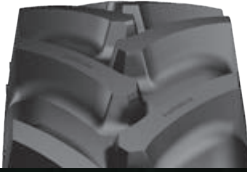
Perfect grip/high traction with wide footprint

**Low Soil Compaction / Reduced Slip**

Special tread structure provides high traction and less sinking at soft surfaces

Wide footprint provides lower soil compaction

Ensures a balanced steering by reduced slip at all surfaces



General purpose R1 farm rear tire with standard profile and tread design for high power tractors



340/85 R28 (13.6 R28)

TL

127 A8/124 B

ALL SIZES



**petlas**<sup>®</sup>

TRACTOR RADIAL

**TA 110** General purpose R1 farm front and rear tire

**Long Service Life / Durability**

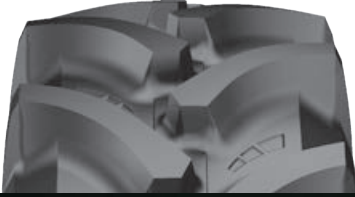
Strong carcass and impact ply. Special tread compound provides high resistance against wear and cuts. Tread profile provides high resistance against tread base fatigue, the tire maintains its traction performance even at its half-life

**High Traction / Self Cleaning**

Special tread geometry provides self cleaning. Strong and flexible sidewall. Perfect grip/high traction with wide footprint

**Low Soil Compaction / Reduced Slip**

Special tread structure provides high traction and less sinking at soft surfaces. Wide footprint provides lower soil compaction. Ensures a balanced steering by reduced slip at all surfaces



General purpose R1 farm front and rear tire with standard profile and tread design for high traction tractors



ALL SIZES

TR110/85		
9.5 R20	TL	108 A8/105 B
280/85 R20 (11.2 R20)	TL	112 A8/109 B
320/85 R20 (12.4 R20)	TL	119 A8/116 B
9.5 R24	TL	107 A8/104 B
280/85 R24 (11.2 R24)	TL	115 A8/112 B
320/85 R24 (12.4 R24)	TL	122 A8/119 B
340/85 R24 (13.6 R24)	TL	125 A8/122 B
380/85 R24 (14.9 R24)	TL	131 A8/128 B
420/85 R24 (16.9 R24)	TL	137 A8/134 B
280/85 R28 (11.2 R28)	TL	118 A8/115 B
320/85 R28 (12.4 R28)	TL	124 A8/121 B
340/85 R28 (13.6 R28)	TL	127 A8/124 B
380/85 R28 (14.9 R28)	TL	133 A8/130 B
420/85 R28 (16.9 R28)	TL	139 A8/136 B
380/85 R30 (14.9 R30)	TL	135 A8/132 B
420/85 R30 (16.9 R30)	TL	140 A8/137 B
460/85 R30 (18.4 R30)	TL	145 A8/142 B
380/85 R34 (14.9 R34)	TL	137 A8/137 B
420/85 R34 (16.9 R34)	TL	142 A8/139 B
460/85 R34 (18.4 R34)	TL	147 A8/144 B



320/85 R36 (12.4 R36)	TL	128 A8/125 B
340/85 R36 (13.6 R36)	TL	132 A8/129 B
320/85 R38 (12.4 R38)	TL	143 A8/143 B
340/85 R38 (13.6 R38)	TL	133 A8/130 B
380/85 R38 (14.9 R38)	TL	139 A8/136 B
420/85 R38 (16.9 R38)	TL	144 A8/141 B
460/85 R38 (18.4 R38)	TL	149 A8/146 B
460/85 R38 (18.4 R38) RF	TL	149 A8/146 B
520/85 R38 (20.8 R38)	TL	155 A8/152 B
520/85 R38 (20.8 R38) RF	TL	155 A8/152 B
520/85 R42 (20.8 R42)	TL	157 A8/157 B
520/85 R42 (20.8 R42) RF	TL	162/A8
520/85 R46 (20.8 R46)	TL	158 A8/155 B
520/85 R46 (20.8 R46) RF	TL	158 A8/155 B
650/85 R38 (20.8 R38)	TL	173 A8/173 B
<b>TR110/80</b>		
260/80 R20 (8.00 R20)	TL	106 A8/103 B
480/80 R42 (18.4 R42)	TL	151 A8/148 B
480/80 R46 (18.4 R46)	TL	158 A8/158 B
480/80 R50 (18.4 R50)	TL	159 A8/159 B
<b>TR110/70</b>		
200/70 R16	TL	94/A8
240/70 R16 (6.00 R16)	TL	104 A8/101 B
260/70 R16 (6.50 R16)	TL	109 A8/106 B
260/70 R20 (6.50 R20)	TL	113 A8/113 B
280/70 R16 (7.50 R16)	TL	112 A8/112 B
280/70 R18 (7.50 R18)	TL	114 A8/114 B
280/70 R20 (7.50 R20)	TL	116 A8/116 B
300/70 R20 (9.50 R20)	TL	110 A8/110 B
320/70 R20 (11.2 R20)	TL	113 A8/113 B
360/70 R20 (12.4 R20)	TL	120 A8/117 B
320/70 R24 (11.2 R24)	TL	116 A8/113 B
360/70 R24 (12.4 R24)	TL	122 A8/119 B
380/70 R24 (13.6 R24)	TL	125 A8/125 B
420/70 R24 (14.9 R24)	TL	130 A8/127 B
480/70 R24 (16.9 R24)	TL	138 A8/135 B
480/70 R26 (16.9 R26)	TL	139 A8/136 B
320/70 R28 (11.2 R28)	TL	119 A8/116 B
360/70 R28 (12.4 R28)	TL	125 A8/122 B
380/70 R28 (13.6 R28)	TL	127 A8/124 B
420/70 R28 (14.9 R28)	TL	133 A8/130 B
480/70 R28 (16.9 R28)	TL	140 A8/140 B
420/70 R30 (14.9 R30)	TL	134 A8/131 B
480/70 R30 (16.9 R30)	TL	141 A8/138 B
520/70 R30 (18.4 R30)	TL	145 A8/142 B
480/70 R34 (16.9 R34)	TL	143 A8/140 B
520/70 R34 (18.4 R34)	TL	148 A8/145 B
480/70 R38 (16.9 R38)	TL	145 A8/142 B
520/70 R38 (18.4 R38)	TL	150 A8/147 B
580/70 R38 (20.8 R38)	TL	155 A8/152 B
<b>TR110/65</b>		
440/65 R24 (13.6 R24)	TL	128 D/131 A8
480/65 R24 (14.9 R24)	TL	133 D/136 A8
540/65 R24 (16.9 R24)	TL	140 D/143 A8
440/65 R28 (13.6 R28)	TL	131 D/134 A8
480/65 R28 (14.9 R28)	TL	136 D/139 A8
540/65 R28 (16.9 R28)	TL	149 D/152 A8
540/65 R30 (16.9 R30)	TL	150 D/153 A8
540/65 R34 (16.9 R34)	TL	145 D/148 A8
600/65 R34 (18.4 R34)	TL	151 D/154 A8
540/65 R38 (16.9 R38)	TL	147 D/150 A8
600/65 R38 (18.4 R38)	TL	159 D/162 A8
650/65 R38	TL	163 D/166 A8



**TA 120/95** General purpose R1 farm front and rear tire with narrow profile

**Long Service Life / Durability**

Strong carcass and impact ply

Special tread compound provides high resistance against wear and cuts

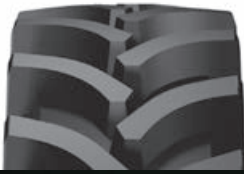
Tread profile provides high resistance against tread base fatigue, the tire maintains its traction performance even at its half-life

**Narrow Profile / Crop Protection**

Narrow profile and special tread design eliminates crop damage

**High Traction / Heavy Load**

Strong tread and carcass structure provide high traction under heavy load



General purpose R1 farm front and rear tire with narrow profile and tread design for sprayers and row crop tractors



ALL SIZES

210/95 R32 (8.3 R32)	TL	114 A8/114 B
230/95 R32 (9.5 R32)	TL	126 A8/126 B
270/95 R32 (11.2 R32)	TL	136 A8/136 B
210/95 R36 (8.3 R36)	TL	116 A8/116 B
230/95 R36 (9.5 R36)	TL	128 A8/128 B
270/95 R38 (11.2 R38)	TL	140 A8/140 B
230/95 R40 (9.5 R40)	TL	122 A8/122 B
210/95 R44 (8.3 R44)	TL	120 A8/120 B
230/95 R44 (9.5 R44)	TL	132 A8/132 B
270/95 R44 (11.2 R44)	TL	142 A8/142 B
230/95 R48 (9.5 R48)	TL	136/A2
270/95 R48 (11.2 R48)	TL	144 A8/144 B
270/95 R54 (11.2 R54)	TL	157/A2
300/95 R46 (12.4 R46)	TL	148/A8



TRAILER

**UN1** 3RIB Heavy load capacity trailer tire with special tread design

**Long Service Life / Durability**

Durable nylon carcass structure

Special tread design

High resistance against cuts and tread wear with special tread geometry design

**Heavy Load Capacity / High Performance**

Special tread structure

High resistance carcass structure

Triple tread circumferential

Conic structure

It squeezes less soil with its wide base area, so provides high load capacity

Self-cleaning property



Heavy load capacity trailer tire with special tread design for fields and short distance roads



7.50-16

10PR

TT

116/A6

ALL SIZES



**UN1** 5 Rib Modern harvester and trailer tire

**Long Life**

Durable nylon carcass structure

Deep / wide 5 rib tread design on the center

Strong tread on shoulders

High resistance against cuts and tread wear thanks to special tread mixture

**Perfect Load Capacity / Ultimate Performance**

Strong carcass structure

Strong tread on shoulders

It prevents from slide to sides and sinking to the ground with its wide tread design and high load capacity, and provides a balanced drive



Modern harvester and trailer tire for fields and short distance roads



ALL SIZES

10.0/75-15.3	10PR	TT	123/A8
10.0/75-15.3 RF	10PR	TL	123/A8
10.0/75-15.3	10PR	TL	123/A8
10.0/75-15.3	12PR	TL	126/A8
10.0/75-15.3 RF	12PR	TL	126/A8
11.5/80-15.3	12PR	TT	135/A6
11.5/80-15.3	12PR	TL	135/A8
11.5/80-15.3 RF	12PR	TL	135/A8
12.5/80-15.3	12PR	TL	139/A8
12.5/80-15.3 RF	12PR	TL	139/A8
12.5/80-15.3	16PR	TL	144/A8
400/60-15.5	14PR	TL	145/A8
10.5/65-16	10PR	TT	123/A8
340/55-16	12PR	TL	140/A8
15.0/55-17	14PR	TL	137/A8
19.0/45-17	12PR	TL	141/A8
500/50-17	10PR	TL	143/A8
500/50-17	14PR	TL	149/A8
10.5/80-18	14PR	TT	142/A8
12.5/80-18	14PR	TT	146/A8
13.0/65-18	14PR	TT	141/A8





TRAILER

**UN3** Heavy load capacity trailer tire  
(for modern agriculture)

**Long Service Life / Durability**

Durable nylon carcass structure

Special tread design

High resistance against cuts and tread wear with special tread geometry design

**Heavy Load Capacity / High Performance**

Special tread structure

High resistance carcass structure

It squeezes less soil with its wide base area, so provides high traction on soft surfaces. It provides perfect balance also on soft surfaces by preventing slide to sides



Heavy load capacity trailer tire (for modern agriculture) with special tread design for fields and short distance roads



ALL SIZES

10.0/80-12	10PR	TT	122/A8
10.0/80-12	10PR	TL	122/A8
10.0/75-15.3	10PR	TT	123/A8
10.0/75-15.3	10PR	TL	123/A8
10.0/75-15.3 RF	10PR	TL	123/A8
10.0/75-15.3	12PR	TL	126/A8
11.5/80-15.3	12PR	TT	135/A8
11.5/80-15.3	12PR	TL	135/A8
11.5/80-15.3 RF	12PR	TL	137/A8
12.5/80-15.3 RF	12PR	TL	141/A8
12.5/80-15.3	14PR	TL	142/A8
12.5/80-15.3	16PR	TL	144/A8
260/70-15.3	12PR	TL	126/A8



TRAILER

**UN5** Heavy load capacity trailer tire with special tread design for fields

**Long Service Life / Durability**

Durable nylon carcass structure

Special tread design

High resistance against cuts and tread wear with special tread geometry design

**Heavy Load Capacity / High Performance**

Special tread structure

High resistance carcass structure

It squeezes less soil with its wide base area, so provides high traction on soft surfaces. It provides perfect balance also on soft surfaces by preventing slide to sides



Heavy load capacity trailer tire with special tread design for fields and short distance roads



ALL SIZES

10.0/80-12	10PR	TT	122/A8
10.0/80-12	10PR	TL	122/A8
10.0/80-12 RF	10PR	TT	122/A8
10.0/80-12 RF	10PR	TL	122/A8



TRAILER

**PA 20** Traction type trailer tire with heavy load capacity

**Long Life**

Durable nylon carcass structure

Special tread design

High resistance against cuts and tread wear with special deep geometry design

**Heavy Load Capacity / Self Cleaning**

Special tread structure

Strong carcass structure, high load capacity and self-cleaning property



Traction type trailer tire with heavy load capacity for fields and short distance roads



ALL SIZES

8.25-20	12PR	TT	130/A6
8.25-20	14PR	TT	133/A6



**petlas**<sup>®</sup>

TRAILER

**PA 30** Traction type trailer tire with heavy load capacity

**Long Life**

Durable nylon carcass structure

Special tread design

High resistance against cuts and tread wear with special deep geometry design

**Heavy Load Capacity / Self Cleaning**

Special tread structure

Strong carcass structure, high load capacity and self-cleaning property



Traction type trailer tire with heavy load capacity for fields and short distance roads



7.50-16

12PR

TT

121/A6

ALL SIZES



TRAILER

**NT 3** Traction type trailer tire with heavy resistance

**Long Life**

Durable nylon carcass structure

Special tread design

Wide and deeper tread design provides high resistance against cuts and tread fatigue

**Heavy Load Capacity / Self Cleaning**

Special tread structure

Strong carcass structure, high load capacity and self-cleaning property



Traction type trailer tire with heavy resistance for fields and short distance roads. High resistance against cuts and tread wear with special wide / deep geometry design



ALL SIZES

9.00-16	12PR	TL	125/A6
9.00-16	12PR	TT	125/A6
9.00-16	14PR	TT	128/A6
9.00-16	16PR	TT	131/A6



TRAILER

## **NT 30** Special trailer tire

### **Long life / Durability**

Durable nylon carcass structure

Special tread compound for heavy load conditions

High resistance against cuts and tread wear with special tread geometry design

### **Heavy load capacity / Self cleaning**

Special tread structure

Strong carcass structure, high load capacity and self-cleaning property



Special trailer tire



ALL SIZES

9.00-16	12PR	TT	125/A6
9.00-16	14PR	TT	128/A6
9.00-16	16PR	TT	131/A6





TRAILER

## **NB 27** Traction type trailer tire

### **Long Life / Durability**

Durable nylon carcass structure

Special tread design

High resistance against cuts and tread wear with special deep geometry design

### **Heavy Load Capacity / Self Cleaning**

Special tread geometry provides easy steering

Flexible carcass structure prevents sinking



Traction type trailer tire with heavy load capacity for fields and short distance roads



9.00-20

14PR

TT

133/A6

ALL SIZES



**petlas**<sup>®</sup>

TRAILER

## **NB 37** Traction type trailer tire

### **Long Life**

Durable nylon carcass structure

Special tread design

High resistance against cuts and tread wear with special deep geometry design

### **Heavy Load Capacity / Self Cleaning**

Special tread structure

High resistance carcass structure

Reinforced sidewall

High load capacity, self-cleaning and high resistance against side impacts



Traction type trailer tire with heavy load capacity for fields and short distance roads



7.50-16

12PR

TT

121/A6

ALL SIZES



HARVESTER

**BD 60** General purpose agricultural tire

**Long Life**

Durable nylon carcass structure

Special tread design

High resistance against cuts and tread wear with special tread

**High Traction**

Perfect grip to soil / slide free transmission of power to the ground with tread geometry, designed differently on center and shoulders

Thanks to the special tread geometry property, this traction level is maintained in the later half-life of the tire

**Self Cleaning**

The tire cleans itself by its special tread design



General purpose agricultural tire with standard profile and R1 deep tread design for high power-high traction tractors / harvesters



ALL SIZES

18.4/15-30	16PR	TT	153/A6
18.4/15-30	14PR	TT	151/A6



## HARVESTER

### **BD 65** Harvester tire

#### **Long Life / Durability**

Durable nylon carcass structure

Special tread compound harvester

High resistance against cuts and tread wear with special tread geometry design

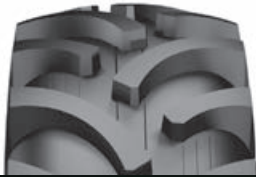
#### **High Traction / Self Cleaning**

Special tread geometry, designed differently on center and shoulders

Perfect grip/high traction and self-cleaning property

#### **High Safety On Inclined Fields**

Prevention from side rolling / high safety thanks to improved lateral resistance with reinforced sidewall / carcass structure



### Harvester tire



ALL SIZES

23.1-26	12PR	TT	153/A6
23.1-26	14PR	TL	156/A6
23.1-26	18PR	TL	162/A6
23.1-30	12PR	TT	151/A6
23.1-30	14PR	TL	154/A6
23.1-30	18PR	TL	160/A6
20.8-38	14PR	TT	159/A6
20.8-38	14PR	TL	159/A6



## HARVESTER

### TA 130 General purpose radial harvester tire

#### Long Life / Durability

Strong carcass and special composite anti-impact ply  
Special tread compound harvester operating conditions  
Long life and perfect quality harvester tire with high resistance against cuts and tread wear thanks to wide / deep tread geometry design.

#### High Traction / Perfect Load Capacity

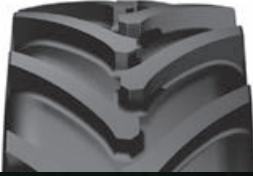
Perfect grip to soil / slide free transmission of power to the ground with tread geometry, designed differently on center and shoulders. Wide base area and tall tread design. Perfect performance under heavy loads and high traction with its extra reinforced structure.

#### High Safety On Inclined Fields

Prevention from side rolling / high safety thanks to improved lateral resistance with reinforced sidewall / carcass structure.

#### Perfect Use / Protection Of Crops

Wide mass / special tread design. Flat base area. It does not sink to the ground or damage the crops and absorbs the impacts thanks to the flexible structure, even under heavy loads.



General purpose radial harvester tire with standard profile and R1 deep tread and wide base design for high power-high traction harvesters



ALL SIZES

620/75 R30 (23.1 R30)	TL	163/A8
650/75 R32 (24.5 R32)	TL	172 A8 / 172 B





HARVESTER

**UN1** Modern harvester and trailer tire

**Long Life**

Durable nylon carcass structure

Deep / wide 5 rib tread design on the center

Strong tread on shoulders

High resistance against cuts and tread wear thanks to special tread mixture

**Perfect Load Capacity / Ultimate Performance**

Strong carcass structure

Strong tread on shoulders

It prevents from slide to sides and sinking to the ground with its wide tread design and high load capacity, and provides a balanced drive



Modern harvester and trailer tire for fields and short distance roads



12.5/80-18

14PR

TT

146/A8

ALL SIZES





FLOTATION

**IMF 18** High traction general purpose flotation tire

**Long Life**

Durable nylon carcass structure

Tread design, developed for soft surfaces

High resistance against cuts and tread wear thanks to deep and wide tread geometry design

**Perfect Load Capacity / Ultimate Performance**

Strong tread structure

Strong shoulder structure

With its wide / round tread design and heavy load capacity, it provides perfect balance also on soft surfaces by preventing slide to sides

**High Performance**

Resistance against side impacts with strong structure and reinforced sidewall mixture

Absorbs side impacts with its special sidewall mixture and grips the soil perfectly and prevents the vehicle to slide to sides



High traction general purpose flotation tire with standard profile and deep tread design, developed for heavy working conditions



ALL SIZES

12.5/80-15.3 RF	12PR	TL	141/A8
12.5/80-15.3 RF	16PR	TL	144/A8
400/60-15.5	14PR	TL	145/A8
400/60-15.5	16PR	TL	153/149 A6
400/60-15.5	18PR	TL	155/151 A6
500/60-22.5	16PR	TL	163 A8/159 B
550/60-22.5	16PR	TL	167 A8/163 B
600/50-22.5	16PR	TL	165 A8/161 B



**IMT 18** High traction general purpose forestry tire

**Long Life**

Durable nylon carcass structure  
 Reinforced tread mixture for forest conditions  
 High resistance against cuts and tread wear thanks to deep and wide tread geometry design

**High Traction**

Thanks to its tread design, developed differently on center and shoulders, it grips the soil perfectly and prevents the vehicle to slide to sides. This property also provides fuel save.  
 No-sinking property with wide base area

**High Performance**

Resistance against side impacts with strong structure and reinforced sidewall mixture  
 Absorbs side impacts with its special sidewall mixture and grips the soil perfectly and prevents the vehicle to slide to sides



High traction general purpose forestry tire with standard profile and deep tread design, developed for heavy working conditions



ALL SIZES

400/60-15.5	14PR	TL	145/A8
400/60-15.5	16PR	TL	153/149 A6
400/60-15.5	18PR	TL	155/151 A6
500/60-22.5	16PR	TL	163 A8/159 B
550/60-22.5	16PR	TL	167 A8/163 B
600/50-22.5	16PR	TL	165 A8/161 B



FORESTRY

## **IMT 08** High traction general purpose forestry tire

### **Long Life**

Durable nylon carcass structure

Reinforced tread mixture for forest conditions

High resistance against cuts and tread wear thanks to deep and wide tread geometry design

### **High Traction**

Thanks to its tread design, developed differently on center and shoulders, it grips the soil perfectly and prevents the vehicle to slide to sides. This property also provides fuel save.

No-sinking property with wide base area

### **High Performance**

Resistance against side impacts with strong structure and reinforced sidewall mixture

Absorbs side impacts with its special sidewall mixture and grips the soil perfectly and prevents the vehicle to slide to sides



High traction general purpose forestry tire with standard profile and deep tread design, developed for heavy working conditions



ALL SIZES

500/60-22.5	10PR	TL	153/141 A8
500/60-22.5	16PR	TL	159/147 A8
550/60-22.5	16PR	TL	167/155 A8
600/50-22.5	16PR	TL	156/144 A8



**petlas**<sup>®</sup>

DISTRIBUTED BY



**petlas**<sup>®</sup>

### **Headquarters - Factory**

Petlas Tire Industry and Trade  
Kırşehir - Kayseri Devlet Yolu Üzeri  
Gölhisar Mevkii 7. km  
Kırşehir / TURKEY  
T: +90 386 252 65 50  
F: +90 386 252 65 70

### **Int. Sales & Marketing**

Petlas Tire Industry and Trade  
Kazım Karabekir Cd. Özcan Plaza  
No:124 06060 Ankara / TURKEY  
T: +90 312 309 30 30  
F: +90 312 310 95 09

[www.petlas.com](http://www.petlas.com)

2015 EDITION

**MADE IN TURKEY**