



*petlas*

# AGRICULTURAL TIRES



*petlas*  
TRACK OF TRUST



## DESCRIPTION

\* For load capacity and inflation pressure figures on different speed rates, please consult the producer company.

\*\*Load capacity on standard speed and standard load.

Our company is entitled to change any information in this catalogue without prior notice.

This catalogue overrides any previous catalogues

All figures are for reference; our company cannot be deemed responsible for printing errors.

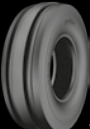
\*\*\*The visual content of the catalogue is only representative. To find the compatible tire for your car, please refer to the car service or authorized dealer.

# RANGE OF PETLAS AGRICULTURAL TIRES

## Tractor Front



TD 16



TD 17



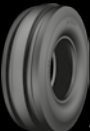
TD 18



TP 8



TD 25



TD 35



TA 50



TA 60

## Tractor Rear



TA 60



TZ 13



TA 300



TA 330

## Tractor Radial



TA 110



TA 120



TA 130



TA 130  
IF Series



TA 140

## Trailer Radial / Trailer



VF HLT 45



NT 3



NT 30



PA 20



NB 27



NB 37



UN 1 (3 RIB)



UN 1 (5 RIB)



UN 3



UN 5



UN 7



STB 3

## Radial Harvester / Harvester - Trailer



TA 130  
AGROPER



PB 140  
AGROPER



UN 9  
Harvester - Trailer



UN1 (5 RIB)



BD 60



BD 65



TA 330

## Floatation / Forestry



IMF 18



IMT 18



IMT 08

# TD 16

Front tire for 2WD tractors appropriate to use on field and short distance road operations.

Durable shoulders increase tire resistance to any kind of damage and protect the tire effectively. Specially rounded thread root offers high endurance to stubble impacts and fissures. Offers long life thanks to the use of a wear-resistant tread compound. Keep the tread pattern free from the mud by special tread design.



■ ALL SIZES

5.50-16	6PR	TT	86/A6
6.00-16	6PR	TT	88/A6
6.50-16	6PR	TT	91/A6
6.50-16	8PR	TT	97/A6
7.50-16	6PR	TT	98/A6
7.50-16	8PR	TT	103/A6
6.00-19	6PR	TT	93/A6
6.50-20	8PR	TT	108/A6
6.50-20	10PR	TT	115/A6
7.50-20	8PR	TT	108/A6
7.50-20	10PR	TT	115/A6



TRACTOR FRONT

TD 17

Ideal 2WD tractor front tire with its special 3Rib design.

The rib design provides ultimate steering performance during soil tillage operations also across soft and cultivated areas. Highly resistant to cut and wears due to its strong nylon carcass structure. Flexible carcass structure prevents sinking. Special tread design provides efficient self-cleaning.



■ ALL SIZES

6.00-16	6PR	TT	88/A6
7.50-16	8PR	TT	103/A6
9.00-16	8PR	TT	111/A6
11.00-16	8PR	TT	118/A6



TRACTOR FRONT

TD 18

Front tire for 2WD tractors appropriate to use on field and short distance road operations.

Tread pattern and flexible carcass structure provide excellent maneuverability without sinking into the soil. Improved tread compound enable high resistance against wears and cuts. Strong center and shoulder design provides high resistance to side impacts and tread base fatigue. Special tread geometry provides easy steering. Flexible carcass structure prevents sinking.



ALL SIZES

6.50-16	6PR	TT	91/A6
6.50-16	8PR	TT	97/A6
7.50-18	8PR	TT	106/A6
7.50-20	8PR	TT	108/A6



# TRACTOR FRONT

## TP 8

Front tire for 2WD tractors appropriate to use on field and short distance road operations.

Tread pattern and flexible carcass structure provide excellent maneuverability without sinking into the soil. Improved tread compound enable high resistance against wear and cuts.Strong center and shoulder design provides high resistance to side impacts and tread base fatigue. Special tread geometry provides easy steering.Flexible carcass structure prevents sinking.



### ALL SIZES

6.00 -16	6PR	TT	88/A6
7.50- 16	6PR	TT	98/A6
7.50- 16	8PR	TT	103/A6



TD 25

Front tire for 2WD tractors appropriate to use on field and short distance road operations.

Durable shoulders increase tire resistance to any kind of damage and protect the tire effectively. Specially rounded thread root offers high endurance to stubble impacts and fissures. The strong carcass structure provides longevity. Special tread geometry provides easy steering. Flexible carcass structure prevents sinking.



ALL SIZES

6.00-16	6PR	TT	88/A6
6.00-16	10PR	TT	98/A8
6.50-16	6PR	TT	91/A6
6.50-16	8PR	TT	97/A6
7.50-16	8PR	TT	103/A6



## TRACTOR FRONT

# TD 35

Ideal 2WD tractor front tire with its special 3Rib design.

The rib design provides ultimate steering performance during soil tillage operations also across soft and cultivated areas. Highly resistant to cut and wears as a result of its strong nylon carcass structure. Flexible carcass structure prevents sinking. Special tread design provides efficient self-cleaning.



### ■ SIZE

10.00 -16

8PR

TT

114/A6



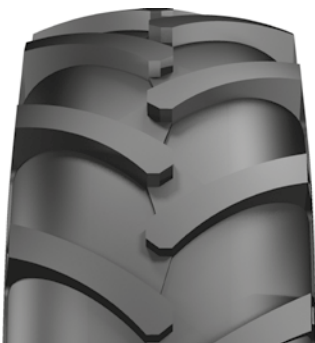
**petlas**

# TRACTOR FRONT

## TA 50

High traction R1 tractor front tire for medium and low powered tractors.

Offers effective self-cleaning feature and grip performance during tillage operations by its special tread geometry. -Highly resistant to cuts and wears.Tread profile provides high resistance to tread base fatigue.Wide and strong body provides easy grip and high traction. Special tread geometry provides efficient self-cleaning.



### ALL SIZES

6.5/80-12	6PR	TT	80/A6
6.5/80-12	6PR	TL	80/A6
6.5/80-13	6PR	TT	82/A6



TRACTOR FRONT

TA 60

High traction R1 tractor front tire for medium and low powered tractors.

The wide and long lugs provide comfortable drive while increasing grip capacity.Offers long service life thanks to the use of a wear resistant tread compound.Efficient self-cleaning thanks to special tread design.Tread profile enable high resistance to tread base fatigue.Wide and strong body provides easy grip and high traction. Special tread geometry provides efficient self-cleaning.



■ ALL SIZES

5.00-10	4PR	TT	70/58A6
5.00-12	4PR	TT	62/A6
6.5/80-12	6PR	TT	80/A6
7.00-12	6PR	TT	83/A6
10.0/80-12	6PR	TT	98/A6
10.0/80-12	6PR	TL	98/A6
5.00-15	6PR	TT	88/A6
10.0/75-15.3	12PR	TT	114/A6
11.5/80-15.3	12PR	TT	123/A6
11.5/80-15.3	12PR	TL	123/A6
6.00-16	6PR	TT	88/A6
6.50-16	6PR	TT	91/A6
7.50-16	8PR	TT	103/A6
7.00-18	8PR	TT	106/A6
7.50-18	8PR	TT	106/A6
7.50-20	8PR	TT	108/A6
8.00-20	8PR	TT	113/A6
9.50-20	8PR	TT	107/A6

TRACTOR REAR

TA 60

High traction R1 tractor rear tire for medium and low powered tractors.

The wide and long lugs provide comfortable drive while increasing grip capacity.Offers long service life thanks to the use of a wear resistant tread compound.Efficient self-cleaning thanks to special tread design. Tread profile enable high resistance to tread base fatigue.Special tread geometry provides efficient self-cleaning. Wide and strong body provides easy grip and high traction.



ALL SIZES

8.3-24	8PR	TT	108/A6
9.5-24	8PR	TT	112/A6
11.2-24	8PR	TT	116/A6
14.9/13-24	4PR	TL	112/A6
14.9/13-24	4PR	TT	112/A6
14.9/13-24	6PR	TT	123/A6
14.9/13-24	8PR	TT	128/A6
14.9/13-24	10PR	TT	134/A6
14.9/13-24	14PR	TT	142/A6
12.4/11-24	6PR	TT	115/A6
12.4/11-24	8PR	TT	120/A6
12.4/11-24	12PR	TT	128/A6
13.6/12-24	8PR	TT	123/A6
18.4/15-26	12PR	TT	146/A6
18.4/15-26	12PR	TL	146/A6
18.4/15-26	14PR	TT	149/A6
11.2-28	8PR	TT	118/A6
12.4/11-28	6PR	TT	117/A6
12.4/11-28	8PR	TT	122/A6
13.6/12-28	6PR	TT	121/A6
13.6/12-28	8PR	TT	125/A6
14.9/13-28	6PR	TT	125/A6
14.9/13-28	8PR	TT	130/A6
16.9/14-28	8PR	TT	135/A6
16.9/14-28	10PR	TT	139/A6
16.9/14-28	12PR	TT	143/A6
14.9/13-30	8PR	TT	131/A6
14.9/13-30	10PR	TT	135/A6
16.9/14-30	6PR	TT	130/A6
16.9/14-30	8PR	TT	137/A6
16.9/14-30	10PR	TT	139/A6
16.9/14-30	12PR	TT	143/A6

16.9/14-30	14PR	TT	144/A6
18.4/15-30	6PR	TT	134/A6
18.4/15-30	8PR	TT	139/A6
18.4/15-30	10PR	TT	145/A6
18.4/15-30	12PR	TT	149/A6
18.4/15-30	14PR	TT	151/A6
12.4/11-32	8PR	TT	124/A6
16.9/14-34	8PR	TT	139/A6
16.9/14-34	10PR	TT	142/A6
16.9/14-34	12PR	TT	145/A6
16.9/14-34	14PR	TT	148/A6
18.4/15-34	8PR	TT	141/A6
18.4/15-34	10PR	TT	146/A6
18.4/15-34	12PR	TT	151/A6
18.4/15-34	14PR	TT	156/A6
12.4/11-36	8PR	TT	126/A6
13.6/12-36	6PR	TT	125/A6
13.6/12-36	8PR	TT	129/A6
13.6/12-38	8PR	TT	131/A6
14.00-38	8PR	TT	131/A6
14.00-38	10PR	TT	136/A6
15.5-38	8PR	TT	133/A6
15.5-38	10PR	TT	138/A6
15.5-38	12PR	TT	142/A6
15.5-38	14PR	TT	145/A6
16.9/14-38	8PR	TT	141/A6
16.9/14-38	10PR	TT	144/A6
16.9/14-38	12PR	TT	142/A6
18.4-38	8PR	TT	143/A6
18.4-38	10PR	TT	147/A6
15.5/80-24 RF	12PR	TL	157/145 A8
15.5/80-24 RF	16PR	TL	163/151 A8

RF: REINFORCED

# TRACTOR REAR

## TZ 13

### Tractor rear tire suitable for field operations

Provide excellent and extra traction in all working condition by high lugs. Resistant to cuts and wears thanks to its special compound. Strong nylon carcass structure provides optimum durability. Open center pattern provides efficient self-cleaning and offers high resistance to tread base fatigue. Safe handling on hilly or sloping grounds.



#### ALL SIZES

12.4/11-28	8PR	TT	122/A6
16.9/14-30	10PR	TT	139/A6
16.9/14-30	12PR	TT	144/A6



# TA 300

## R1 tractor rear tire.

The special lug design reduces any kind of crop damage during field operations. Exceptional carcass structure provides optimum durability. Tread profile with extra wide tread base provides perfect resistance to tread base fatigue. Wide and reinforced body provides easy grip, high traction and reduced slipping. Special tread design for tough terrains provides superior performance. Easy lug cleanability.



■ ALL SIZES

9.5-24	8PR	TT	112/A6
11.2-24	8PR	TT	116/A6
12.4/11-24	8PR	TT	120/A6
12.4/11-24	10PR	TT	124/A6
13.6/12-24	8PR	TT	123/A6
14.9/13-24	8PR	TT	128/A6
12.4/11-28	8PR	TT	122/A6
13.6/12-28	8PR	TT	125/A6
14.9/13-28	8PR	TT	130/A6
14.9/13-30	8PR	TT	131/A6
16.9/14-30	8PR	TT	137/A6
16.9/14-30	10PR	TT	139/A6
18.4/15-30	8PR	TT	139/A6
18.4/15-30	10PR	TT	145/A6
18.4/15-30	12PR	TT	149/A6
18.4/15-30	14PR	TT	151/A6
16.9/14-34	8PR	TT	139/A6
18.4/15-34	8PR	TT	141/A6
12.4/11-36	8PR	TT	126/A6
13.6/12-36	8PR	TT	129/A6
16.9/14-38	8PR	TT	141/A6

## TRACTOR REAR

# TA 330

### R1 tire designed for high load tractor applications

With its specially developed tread design, it provides superior traction without damaging your crops and compacting the soil. With its specially developed tread compounds and lug geometry, it offers high resistance against lug fatigue and tread wear. Low profile structure provides excellent maneuverability and handling comfort. Reduced vibration with frequently placed lugs. Superior durability against cuts and impacts with reinforced sidewalls. Offers high load capacity.



#### SIZE

30.5L-32

12PR

TL

158/A8



**petlas**

# TA 110

General purpose R1W tractor radial tire.

Special tread compound provides high level of resistance against wear and cuts. Tread profile provide exceptional traction and high performance during its' service life. Wider footprint provides lower soil compaction. Offers excellent self-cleaning capability. Tread profile enhances resistance against tread base fatigue. Ensures a comfortable riding at all terrain. Low rolling resistance yield fuel efficiency. Special tread structure improves flotation on soft terrains.



## ALL SIZES

### TA 110/85 SERIES

9.5	R20	TL	108 A8/105 B
280/85	R20 (11.2 R20)	TL	112 A8/109 B
320/85	R20 (12.4 R20)	TL	119 A8/116 B
9.5	R24	TL	107 A8/104 B
280/85	R24 (11.2 R24)	TL	115 A8/112 B
320/85	R24 (12.4 R24)	TL	122 A8/119 B
340/85	R24 (13.6 R24)	TL	125 A8/122 B
380/85	R24 (14.9 R24)	TL	131 A8/128 B
420/85	R24 (16.9 R24)	TL	137 A8/134 B
280/85	R28 (11.2 R28)	TL	118 A8/115 B
320/85	R28 (12.4 R28)	TL	124 A8/121 B
340/85	R28 (13.6 R28)	TL	127 A8/124 B
380/85	R28 (14.9 R28)	TL	133 A8/130 B
420/85	R28 (16.9 R28)	TL	139 A8/136 B
380/85	R30 (14.9 R30)	TL	135 A8/132 B
420/85	R30 (16.9 R30)	TL	140 A8/137 B
460/85	R30 (18.4 R30)	TL	145 A8/142 B
320/85	R32 (12.4 R32)	TL	126 A8/126 B
380/85	R34 (14.9 R34)	TL	137 A8/137 B
420/85	R34 (16.9 R34)	TL	142 A8/139 B
460/85	R34 (18.4 R34)	TL	147 A8/144 B
320/85	R36 (12.4 R36)	TL	128 A8/125 B
340/85	R36 (13.6 R36)	TL	132 A8/129 B
320/85	R38 (12.4 R38)	TL	143 A8/143 B
340/85	R38 (13.6 R38)	TL	133 A8/130 B
380/85	R38 (14.9 R38)	TL	139 A8/136 B
420/85	R38 (16.9 R38)	TL	144 A8/141 B
460/85	R38 (18.4 R38)	TL	149 A8/146 B
460/85	R38 (18.4 R38) RF	TL	149 A8/146 B
520/85	R38 (20.8 R38)	TL	155 A8/152 B
520/85	R38 (20.8 R38) RF	TL	155 A8/152 B
650/85	R38 (20.8 R38)	TL	173 A8/173 B

520/85 R42 (20.8 R42)	TL	157 A8/157 B
520/85 R42 (20.8 R42) RF	TL	162 A8/162 B
520/85 R46 (20.8 R46)	TL	158 A8/155 B

#### TA 110/80 SERIES

260/80 R20 (8.00 R20)	TL	106 A8/103 B
480/80 R38 (18.4R 38)	TL	149 A8/149 B
480/80 R42 (18.4 R42)	TL	151 A8/148 B
480/80 R46 (18.4 R46)	TL	158 A8/158 B
480/80 R50 (18.4 R50)	TL	159 A8/159 B

#### TA 110/70 SERIES

200/70 R16	TL	94 A8/94 B
240/70 R16 (6.00 R16)	TL	104 A8/101 B
260/70 R16 (6.50 R16)	TL	109 A8/106 B
280/70 R16 (7.50 R16)	TL	112 A8/112 B
280/70 R18 (7.50 R18)	TL	114 A8/114 B
260/70 R20 (6.50 R20)	TL	113 A8/113 B
280/70 R20 (7.50 R20)	TL	116 A8/116 B
300/70 R20 (9.50 R20)	TL	110 A8/110 B
320/70 R20 (11.2 R20)	TL	113 A8/113 B
360/70 R20 (12.4 R20)	TL	120 A8/117 B
380/70 R20 (13.6 R20)	TL	132 A8/132 B
320/70 R24 (11.2 R24)	TL	116 A8/113 B
360/70 R24 (12.4 R24)	TL	122 A8/119 B
380/70 R24 (13.6 R24)	TL	125 A8/125 B
420/70 R24 (14.9 R24)	TL	130 A8/127 B
480/70 R24 (16.9 R24)	TL	138 A8/135 B
480/70 R26 (16.9 R26)	TL	139 A8/136 B
320/70 R28 (11.2 R28)	TL	119 A8/116 B
360/70 R28 (12.4 R28)	TL	125 A8/122 B
380/70 R28 (13.6 R28)	TL	127 A8/127 B
420/70 R28 (14.9 R28)	TL	133 A8/130 B
480/70 R28 (16.9 R28)	TL	140 A8/140 B
420/70 R30 (14.9 R30)	TL	134 A8/131 B
480/70 R30 (16.9 R30)	TL	141 A8/138 B
520/70 R30 (18.4 R30)	TL	145 A8/142 B
480/70 R34 (16.9 R34)	TL	143 A8/140 B
520/70 R34 (18.4 R34)	TL	148 A8/145 B
480/70 R38 (16.9 R38)	TL	145 A8/142 B
520/70 R38 (18.4 R38)	TL	150 A8/147 B
580/70 R38 (20.8 R38)	TL	155 A8/152 B
580/70 R42 (20.8 R42)	TL	158 A8/158 B

#### TA 110/65 SERIES

420/65 R24 (12.4 R24)	TL	126 D/128 B
440/65 R24 (13.6 R24)	TL	128 D/131 A8
480/65 R24 (14.9 R24)	TL	133 D/136 A8
540/65 R24 (16.9 R24)	TL	140 D/143 A8
440/65 R28 (13.6 R28)	TL	131 D/134 A8
480/65 R28 (14.9 R28)	TL	136 D/139 A8
540/65 R28 (16.9 R28)	TL	149 D/152 A8
540/65 R30 (16.9 R30)	TL	150 D/153 A8
540/65 R34 (16.9 R34)	TL	145 D/148 A8
600/65 R34 (18.4 R34)	TL	151 D/154 A8
540/65 R38 (16.9 R38)	TL	147 D/150 A8
600/65 R38 (18.4 R38)	TL	159 D/162 A8
650/65 R38 (20.8 R38)	TL	163 D/166 A8

RF: REINFORCED



**petlas**

# TA 120

General purpose R1W row crop tractor and sprayer tire.

Deep lugs, and special tread compound maintain longer service life. Narrow profile avoids crop damage. Special tread compound provides high resistance against wear and cuts. Tread design enhances self-cleaning capability, and ensures less slippage. Robust carcass structure enables maximum performance under heavy loads.



■ ALL SIZES

TA 120/95-90-85 SERIES

210/95 R32 (8.3 R32)	TL	114 A8/114 B
230/95 R32 (9.5 R32)	TL	126 A8/126 B
270/95 R32 (11.2 R32)	TL	136 A8/136 B
210/95 R36 (8.3 R36)	TL	116 A8/116 B
230/95 R36 (9.5 R36)	TL	128 A8/128 B
270/95 R38 (11.2 R38)	TL	140 A8/140 B
230/95 R40 (9.5 R40)	TL	122 A8/122 B
210/95 R44 (8.3 R44)	TL	120 A8/120 B
230/95 R44 (9.5 R44)	TL	132 A8/132 B
270/95 R44 (11.2 R44)	TL	142 A8/142 B
300/95 R46 (12.4 R46)	TL	148 A8/148 B
230/95 R48 (9.5 R48)	TL	136 A2/125 A8
270/95 R48 (11.2 R48)	TL	144 A8/144 B
270/95 R54 (11.2 R54)	TL	157 A2/146 A8
300/95 R52 (12.4 R52)	TL	156 D/159 A8
380/90 R46 (14.9 R46)	TL	159 D/162 A8
340/85 R48 (13.6 R48)	TL	151 D/154 A8



# TRACTOR RADIAL

## TA 130

R1W tire for high power tractors.

Built for high HP tractors, TA-130 is designed to transmit torque to the ground more effectively on any terrain. Special tread geometry ensures less slippage, and better traction which yield savings on fuel. Wider footprint and optimized lug angle minimize soil compaction and improves crop productivity. Elastic structure absorbs impacts, and yields better flotation. Strong carcass, and high-quality tread compound ensures longer service life. Provides driving comfort both on the road and on the field. Reinforced carcass structure enables maximum performance under heavy loads.



### ■ ALL SIZES

#### TA 130/70-65 SERIES

600/70 R28 (18.4 R30)	TL	161 D
600/70 R30 (23.1 R26)	TL	158 D
600/70 R34 (23.1 R34)	TL	160 D
710/70 R38 (20.8 R42)	TL	171 D/174 A8
800/70 R38 (20.8 R46)	TL	178 D/181 A8
620/70 R42 (20.8 R42)	TL	166 D
710/70 R42 (20.8 R46)	TL	173 D
600/65 R28 (18.4 R28)	TL	154 D/157 A8
600/65 R42 (18.4 R42)	TL	154 D/157 A8
650/65 R42 (20.8 R42)	TL	170 D/173 A8



# TRACTOR RADIAL

## TA 130 IF Series

R1W tire for high power tractors.

Tires designed to operate at 20% higher rated load than standard tires at the same air pressure. Highly flexible sidewalls and large footprint offer lower soil compaction. Perfect performance under heavy loads with lower pressure compared to traditional radial tire construction. Special tread design enables exceptional traction performance. Lower inflation pressure, and sidewall flexibility enable comfortable riding. Elastic structure absorbs impacts to a greater extend. Strong carcass, and special tread compound ensures longer service life.



■ ALL SIZES

### TA 130/70-IF SERIES

IF 600/70 R30	TL	165 D
IF 800/70 R38	TL	184 D

IF: Improved Flexion



## TRACTOR RADIAL

# TA 140

General purpose R1W tractor front and rear tire.

Offers durability for a wide spectrum of applications. Special tread compound provides high resistance against wear and cuts. Special tread structure provides high traction and less sinking at soft surfaces. Wide footprint provides lower soil compaction. Strong wear-resistant compound provides high resistance against wear and cuts, offers longevity. Ensures a balanced steering by reduced slip at all surfaces. It does not sink into the ground and absorbs the impacts thanks to the elastic structure.



### ■ SIZE

#### TA 140/85 SERIES

340/85 R28 (13.6 R28)	TL	127 A8/124 B
-----------------------	----	--------------



**petlas**

# TRAILER RADIAL

## VF HLT 45

Multipurpose VF (Very High Flexion) all steel radial tire designed hold up to heavier loads.

Thanks to VF (Very High Flexion) technology shows equal loading and driving performance under low pressure levels, compare to conventional tires. Tread compound provides resistance to cuts and wears on asphalt, hard soil and concrete surfaces. Wide footprint provides lower soil compaction. Specially steer carcass structure offers high endurance to stubble impacts and fissures. Protect crops effectively by its high flexion specialty.



### ■ SIZE

VF 285/70 R19.5 16PR TL 150/D

VF: Very High Flexion



## TRAILER

# NT 3

Traction type trailer tire with heavy resistance.

Suitable for transport and soil tillage operations. Special tread and carcass structure offers high load capacity. Wide and deeper tread design provides high resistance against cuts and tread fatigue.



### ■ ALL SIZES

9.00-16	12PR	TL	125/A6
9.00-16	12PR	TT	125/A6
9.00-16	14PR	TT	128/A6
9.00-16	16PR	TT	131/A6



**petlas**

# NT 30

### Special trailer tire.

Special tread and carcass structure offers high load capacity on soft surfaces. With its specially developed tread compound and geometry, it offers high resistance against cuts and stubble puncture. It does not sink into the ground and absorbs the impacts thanks to the flexible carcass structure.



#### ■ ALL SIZES

9.00-16	12PR	TT	125/A6
9.00-16	14PR	TT	128/A6
9.00-16	16PR	TT	131/A6



## TRAILER

# PA 20

### Traction type trailer tire .

Suitable for short period transport and use in the field areas. Special tread and carcass structure offers high load capacity. With its specially developed tread compound and geometry, it offers high resistance against lug fatigue and tread wear.



#### ■ SIZE

8.25-20

14PR

TT

133/A6



**petlas**

# NB 27

## Traction type trailer tire.

Suitable for short period transport and use in the field areas. Special tread and carcass structure offers high load capacity. With its specially developed tread compound and geometry, it offers high resistance against lug fatigue and tread wear. It does not sink into the ground and absorbs the impacts thanks to the flexible carcass structure.



### ■ SIZE

9.00-20	14PR	TT	133/A6
---------	------	----	--------



## TRAILER

# NB 37

Traction type trailer tire with heavy resistance.

With special deep and tread geometry highly resistant to cuts and tread wear Durable tire thanks to its reinforced sidewalls. High load capacity, self-cleaning and high resistance against side impacts.



### SIZE

7.50-16	12PR	TT	121/A6
---------	------	----	--------



**petlas**

## TRAILER

# UN1 (3 RIB)

Ideal trailer tire.

Offers high loading capacity with minimum soil compaction thanks to special 3 rib tread design. High resistance reinforced carcass structure improves resistant performance against cuts and wears, also enables longevity. Offers excellent self-cleaning features.



### ■ SIZE

7.50-16	10PR	TT	116/A6
---------	------	----	--------



TRAILER

UN 1 (5 RIB)

Modern harvester and trailer tire.

Low dynamic rotating resistance thanks to its 5 Rib design. Suitable for short period transport and use in the field areas. Prevents from slide to sides and sinking into the ground due to its wide base area. High resistance against cuts and wears thanks to special tread compound.



■ ALL SIZES

10.0/75-15.3	10PR	TT	123/A8
10.0/75-15.3	10PR	TL	123/A8
10.0/75-15.3 RF	10PR	TL	123/A8
10.0/75-15.3	12PR	TL	126/A8
10.0/75-15.3 RF	12PR	TL	126/A8
10.0/75-15.3	14PR	TL	130/A8
11.5/80-15.3	12PR	TT	135/A6
11.5/80-15.3	12PR	TL	135/A8
11.5/80-15.3 RF	12PR	TL	135/A8
11.5/80-15.3	14PR	TL	139/A8
12.5/80-15.3	12PR	TL	139/A8
12.5/80-15.3 RF	12PR	TL	139/A8
12.5/80-15.3	16PR	TL	144/A8
400/60-15.5	14PR	TL	145/A8
10.5/65-16	10PR	TT	123/A8
340/55-16	12PR	TL	140/A8
15.0/55-17	14PR	TL	137/A8
19.0/45-17	12PR	TL	141/A8
500/50-17	14PR	TL	149/A8
10.5/80-18	14PR	TT	142/A8
13.0/65-18	14PR	TT	141/A8

RF: REINFORCED

# UN 3

## General purpose trailer tire.

It squeezes less soil with its wide base area, so provides high traction on soft surfaces. It provides perfect balance also on soft surfaces by preventing slide to sides. High resistance against cuts and tread wear with special tread geometry design. Special tread and carcass structure offers high load capacity.



■ ALL SIZES

10.0/80-12	10PR	TT	122/A8
10.0/80-12	10PR	TL	122/A8
260/70-15.3	12PR	TL	126/A8
10.0/75-15.3	10PR	TT	123/A8
10.0/75-15.3 RF	10PR	TL	123/A8
10.0/75-15.3	12PR	TL	126/A8
11.5/80-15.3	12PR	TT	135/A8
11.5/80-15.3	12PR	TL	135/A8
11.5/80-15.3 RF	12PR	TL	137/A8
12.5/80-15.3 RF	12PR	TL	141/A8
12.5/80-15.3	14PR	TL	142/A8
12.5/80-15.3	16PR	TL	144/A8

RF: REINFORCED



TRAILER

UN 5

General purpose trailer tire.

It squeezes less soil with its wide base area, so provides high traction on soft surfaces. It provides perfect balance also on soft surfaces by preventing slide to sides. High resistance against cuts and tread wear with special tread geometry design. Special tread and carcass structure offers high load capacity.



■ ALL SIZES

10.0/80-12	10PR	TT	122/A8
10.0/80-12	10PR	TL	122/A8
10.0/80-12 RF	10PR	TT	122/A8
10.0/80-12 RF	10PR	TL	122/A8

RF: REINFORCED



# UN 7

## General purpose trailer tire.

Superb resistance against stubble punctures and cuts with its special tread compound. It ensures high performance with its Low Section Height profile design. High flotation capability thanks to its wide tread design. Heavy load capacity and long service life due to its special durable carcass structure design.



■ ALL SIZES

9.5L-14SL	8PR	TL	111/B
9.5L-15SL	8PR	TT	112/B
9.5L-15SL	8PR	TL	112/B
9.5L-15SL	12PR	TL	121/B
11L-15SL	8PR	TL	113/B
11L-15SL	12PR	TL	121/B
12.5L-15SL	12PR	TL	127/B



## TRAILER

# STB 3

Trailer tire designed for free rolling axle.

Superb resistance against stubble punctures and cuts with its special tread compound. It ensures high performance with its Low Section.Height profile design.High flotation capability thanks to its wide tread design.Heavy load capacity due to its special carcass design.Very durable tire thanks to its durable carcass structure.



### ■ SIZE

10.0/75-15.3

12PR

TL

126/A8



**petlas**

RADIAL HARVESTER

TA 130 AGROPER

R1W Harvester tire with **aramid belted** structure.

Aramid belt technology provides extra protection against stubble damage compared to steel and fabric alternatives. Perfect performance under heavy loads and high traction with its extra reinforced carcass and bead. Special tread compound is resistant against punctures. Special tread design enables exceptional traction and better handling on the field, as well as for tillage operations. Wider footprint and optimizes lug angle minimize soil compaction and crop damage. Elastic structure absorbs impacts and yields better floatation.



■ ALL SIZES

620/75 R26 (23.1 R26)	TL	166 A8/163 B
620/75 R30 (23.1 R30)	TL	163 A8/160 B
650/75 R32 (24.5 R32)	TL	172 A8/172 B
800/65 R32 (30.5 R32)	TL	178 A8/178 B



## RADIAL HARVESTER

# PB 140 AGROPER

Radial modern harvester tire.

Offers outstanding traction on hard and soft surfaces. Special tread compound extended service life whether it is used on soft or hard surfaces. Fuel consumption efficiency thanks to its low rolling resistance. High load capacity and minimum soil compaction. Strong construction provides excellent performance and endurance.



### ■ SIZE

400/70 R20

TL

158/146 A8



**petlas**

# UN 9

## Harvester rear and trailer tire.

Unique pattern design allows excellent grip and handling in any condition. Stable central tread section with open shoulder design offers high comfort and longer life. Strong sidewall construction and resistant bead construction provides excellent protection against all kind of damage. Good floatation and self-cleaning features. Fuel consumption efficiency thanks to its low rolling resistance.



■ ALL SIZES

16.0/70-20	14PR	TL	154 A8/148 A8
400/70-20	14PR	TL	154 A8/142 A8



## HARVESTER

### UN 1 (5 RIB)

Modern harvester tire.

Low dynamic rotating resistance thanks to its 5 Rib design. Suitable for short period transport and use in the field areas. Less soil compaction prevents from slide to sides and sinking into the ground due to its wide tread contact area. High resistance against cuts and wears thanks to special tread compound.



#### ■ SIZE

12.5/80-18 14PR	TT	146/A8
-----------------	----	--------



**petlas**

# HARVESTER

## BD 60

### Harvester tire.

Offers outstanding comfort and excellent traction during its service-life by special aggressive lug design.Keep the tread pattern free from the mud by unique lug geometry. High resistance against cuts and wears thanks to its strong durable carcass structure and special tread compound. Cost-efficient tire thanks to its performance in the field and in transport. Suitable for heavy duty using without no damage to corps.



■ ALL SIZES

18.4/15-30	16PR	TT	153/A6
18.4/15-30	14PR	TT	151/A6



# HARVESTER

## BD 65

### Harvester tire.

Unique lug design and geometry efficiently keep the tread pattern free from the mud and offers outstanding traction. High resistance against cuts and wears with strong durable carcass structure and special tread compound. Strong carcass structure also provides high load capacity.



#### ■ ALL SIZES

23.1-26	12PR	TT	153/A6
23.1-26	14PR	TL	156/A6
23.1-26	18PR	TL	162/A6
23.1-30	12PR	TT	151/A6
23.1-30	14PR	TL	154/A6
23.1-30	18PR	TL	160/A6
20.8-38	14PR	TT	159/A6
20.8-38	14PR	TL	159/A6



HARVESTER

TA 330

R1 tire designed for harvester applications.

With its specially developed tread design, it provides superior traction without damaging your crops and compacting the soil. With its specially developed tread compounds and lug geometry, it offers high resistance against lug fatigue and tread wear. Low profile structure provides excellent maneuverability and handling comfort. Reduced vibration with frequently placed lugs. Superior durability against cuts and impacts with reinforced sidewalls. Offers high load capacity.



SIZE

30.5L-32	18PR	TL	170/A6
----------	------	----	--------



# IMF 18

General purpose floatation tire.

Non-aggressive pattern design offers large footprint, reduced soil compaction and ensures perfect balance. Resistance against side impacts with strong structure and reinforced sidewall compound. Absorbs side impacts with its special sidewall compound and grips the soil perfectly and prevents the vehicle to slide to sides. Strong tread and strong shoulder structure enable high load capacity.



■ ALL SIZES

12.5/80-15.3	16PR	TL	144/A8
12.5/80-15.3 RF	12PR	TL	141/A8
400/60-15.5	14PR	TL	145/A8
400/60-15.5	16PR	TL	153 A6/149 A6
400/60-15.5	18PR	TL	155 A6/151 A6
500/60-22.5	16PR	TL	163 A8/159 B
550/60-22.5	16PR	TL	167 A8/163 B
600/50-22.5	16PR	TL	165 A8/161 B

RF: REINFORCED



# IMT 18

General purpose forestry tire.

Suitable to use on soft surfaces with non-aggressive pattern. Non-aggressive pattern design offers large footprint, reduced soil compaction and ensures perfect balance. Resistance against side impacts with strong structure and reinforced sidewall compound. Absorbs side impacts with its special sidewall compound and grips the soil perfectly and prevents the vehicle to slide to sides. Strong tread and strong shoulder structure enable high load capacity.



■ ALL SIZES

400/60-15.5	16PR	TL	153/149 A6
400/60-15.5	18PR	TL	155/151 A6
500/60-22.5	16PR	TL	163 A8/159 B
550/60-22.5	16PR	TL	167 A8/163 B
600/50-22.5	16PR	TL	165 A8/161 B



# IMT 08

General purpose floatation tire.

Suitable to use on soft surfaces with non-aggressive pattern. Non-aggressive pattern design offers large footprint, reduced soil compaction and ensures perfect balance. Resistance against side impacts with strong structure and reinforced sidewall compound. Absorbs side impacts with its special sidewall compound and grips the soil perfectly and prevents the vehicle to slide to sides. Strong tread and strong shoulder structure enable high load capacity.



■ ALL SIZES

500/60-22.5	16PR	TL	159/147 A8
550/60-22.5	16PR	TL	167/155 A8
600/50-22.5	16PR	TL	156/144 A8



2018 EDITION



**petlas**

## **Headquarters - Factory**

Petlas Tire Industry and Trade  
Kırşehir - Kayseri Devlet Yolu Üzeri  
Göhlisar Mevkii 7. km Kırşehir / TURKEY  
T. +90 386 252 65 50 F.+90 386 252 65 70

## **Int. Sales & Marketing**

Petlas Tire Industry and Trade  
Kazım Karabekir Cd. Özcan Plaza  
No.124 06060 Ankara / TURKEY  
T. +90 312 309 30 30 F.+90 312 310 95 09

## **Petlas Tire USA**

1111 E. Lincolnway STE 205  
Cheyenne, WY 82001 USA

[www.petlas.com](http://www.petlas.com)

**MADE IN TURKEY**