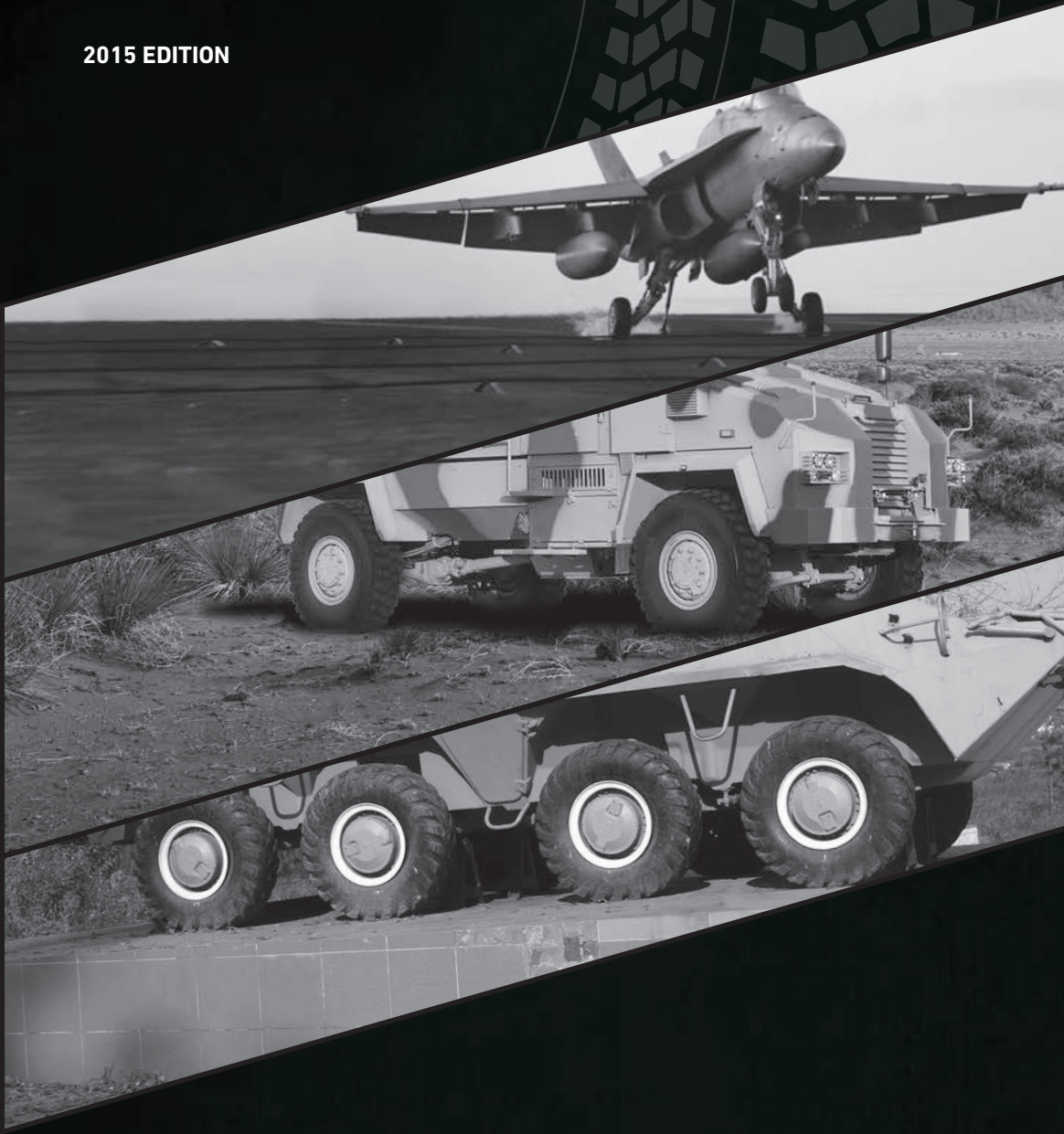


2015 EDITION

petlas®

# MILITARY PURPOSE TIRES



petlas®

## Headquarters - Factory

Petlas Tire Industry and Trade  
Kırşehir - Kayseri Devlet Yolu Üzeri  
Göhlisar Mevkii 7. km  
Kırşehir / TURKEY  
T: +90 386 252 65 50  
F: +90 386 252 65 70

## Int. Sales & Marketing

Petlas Tire Industry and Trade  
Kazım Karabekir Cd. Özcan Plaza  
No:124 06060 Ankara / TURKEY  
T: +90 312 309 30 30  
F: +90 312 310 95 09

[www.petlas.com](http://www.petlas.com)

MADE IN TURKEY

petlas®

## RANGE OF TIRES

### MILITARY LAND VEHICLES



PM 40



PM 50



PN 30



PT 451



PT 461



RM 900

### MILITARY AIRCRAFT



MAIN



NOSE

# PM 40

The tread pattern of this tire provides excellent traction in both forward and reverse direction. Its powerful nylon body protects the tire and provides long life. This is an ideal tire for retreading.



This is an ideal tire for on / off road application under all weather conditions.



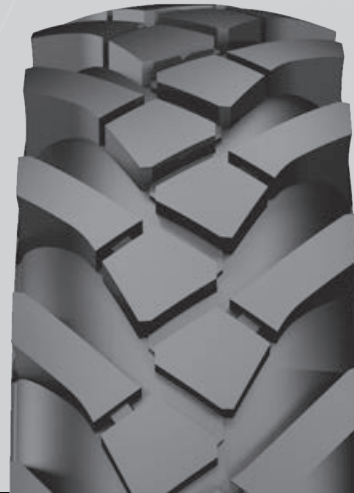
## ■ ALL SIZES

14.00-20 TT 18 PR 160/157 F  
14.00-20 TT 20 PR 161/158 F



# PM 50

Its powerful and densely arranged tread pattern configuration prevents damages under difficult terrain conditions.

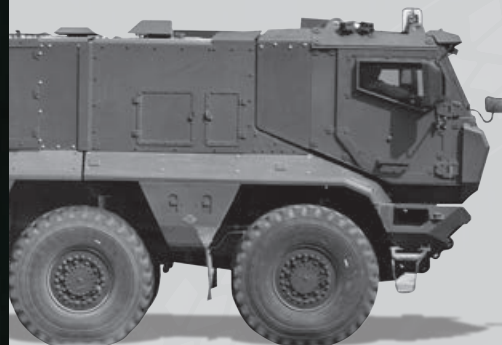


Provides exceptional grip under all kinds of road conditions that require perfect traction.



## ■ ALL SIZES

12.5-20 TT 12 PR 132 F  
12.5-20 TL 12 PR 132 F



## PN 30

The tread pattern is durable against wear and damage. Its powerful nylon body protects the tire and provides long life.



These are the tires that have been developed for special military land vehicles and for all kinds of pavement conditions.



### ■ ALL SIZES

13.00 - 18 TT/TL 8 PR 131 F  
13.00 - 18 TT 10 PR 135 G



## EXPLERO / PT451

Perfect traction on mud, dirt, soft soil, rock surface, snow and off the road with aggressive pattern. Special tread compound enables long service life and durability against cuts and separations. Long life with highly resistant cords provide long service life and durability against cuts and separations. Special compound and structure on bead part, reinforced piles on the tread part provide perfect durability with solid (internal apparatus) section.



Optimal space between blocks provides discharge of mud and snow.



### ■ ALL SIZES

37X12.50 R 16.5 LT TL 127 N  
37X12.50 R 16.5 LT TL 133 N



## EXPLERO / PT461

Perfect traction on soft soil, mud and snow with reinforced block structure. Ultimate traction with wide shoulder canals, helping snow discharge. Durability against cuts with special circular sidewall structure and compound. Well balanced driving with enhanced center block structure and extra traction with separated shoulder blocks.



Long service life with strong construction, tread mixture and durable against cuts and separations with specially designed bead structure.



■ ALL SIZES

7.50R16C TL

116/114 N



## RM / 900

Deep channels between the blocks make a good evacuation of mud or snow and also help the tire go into the surface which gives a perfect traction. The bonds between the blocks give resistance to fragmentations and tears. Block type tread provides exceptional grip in off road conditions. All steel structure and special tread chemical compound enable long service life and enhance resistance against cuts and ruptures.



Manufactured especially for difficult terrain that enhances high traction performance even in muddy, sandy, soft soil, rocky and icy roads which are crucial points for military purpose vehicles.



■ ALL SIZES

14.00R20 TL

164/160 G



# MAIN

Tires used under the main body of military aircrafts.  
T 37, T 38, F 104, F5 and F4 MAIN BODY TIRES FOR MILITARY AIRCRAFTS



## ALL SIZES

20X4.4-12	TL	12PR	T37 MAIN
20X4.4-12	TL	14PR	T37 MAIN
22X8.5-11	TL	16PR	F5 MAIN
26X8.0-14	TL	16PR	F104 MAIN
27.75X8.75-14.5	TL	24PR	F16 BLOCK 40/50 MAIN
30X11.5-14-5	TL	24PR	F4 MAIN
30X11.5-14-5	TL	26PR	F4 MAIN
11.00-12	TL	10PR	TYPE III CN-235 MAIN



# NOSE

Tires used under the nose of military aircrafts.  
T 37, F 4, F 104, F5 and C 130 NOSE TIRES FOR MILITARY AIRCRAFTS



## ALL SIZES

12.5-16	TL	12PR	C130 NOSE
16X4.4	TT	6PR	T37 NOSE
18X5.5	TL	14PR	F4 NOSE
18X5.7-8	TL	18PR	F16 NOSE
18X6.5-8	TL	12PR	F5 NOSE
8.50-10	TL	12PR	TYPE III CN-235 NOSE



petlas®



Petlas Military Purpose tires are characterized by quality workmanship, leading edge technology, unique tread designs and excellent performance offering perfect mix of quality and value.

Our success depends on exceeding the expectations of our customers and standing behind everything we do.

Our aim is to build long term relationships with our customers by providing excellent service, quality and delivering our promises.

